

# USER GUIDE

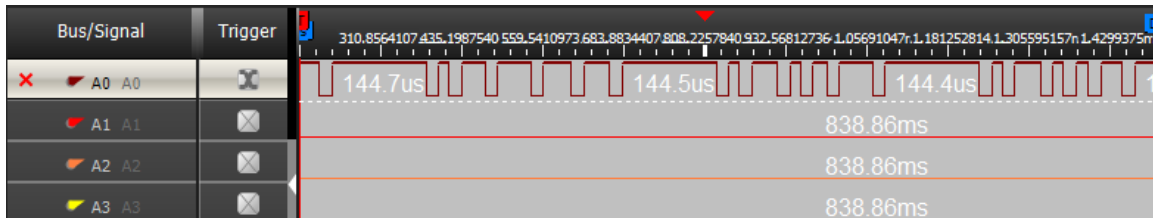
Version:1.1



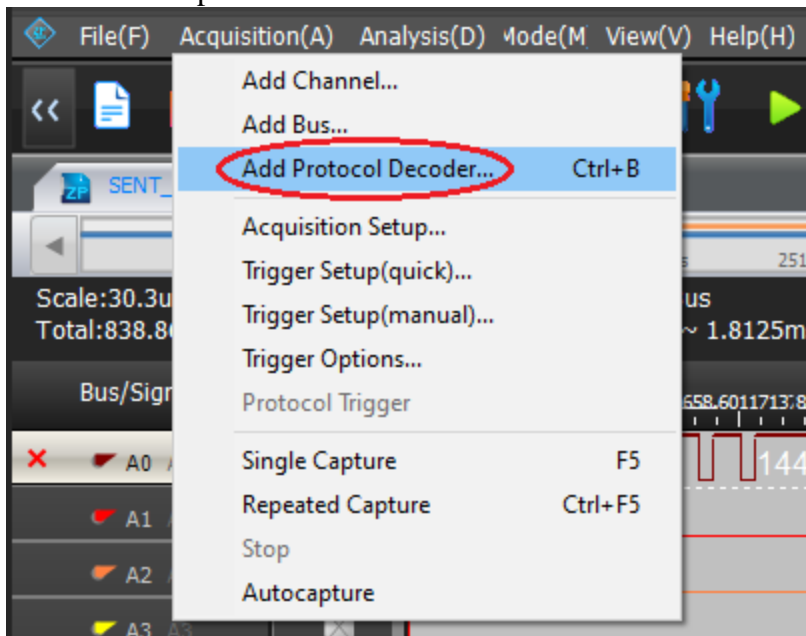
For LAP-Cro 32/16 Channel

## Operating Instructions

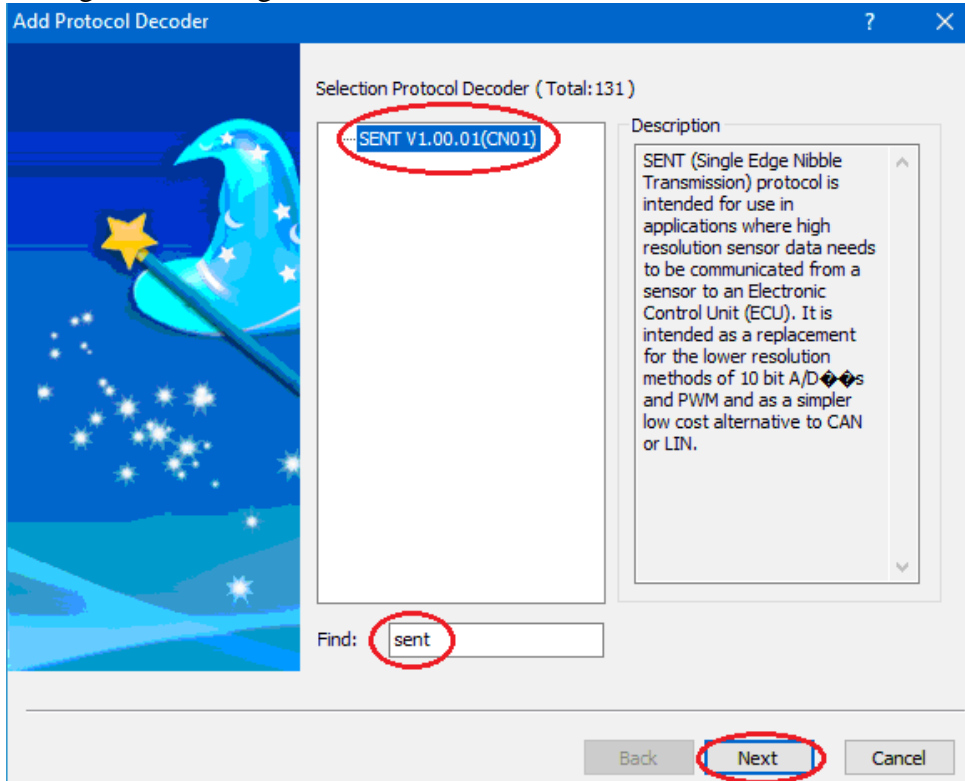
**STEP 1.** Following pictures show the completion of the capture waveform.  
Set Trigger condition, Trigger Level, the Memory depth and the Sampling frequency (the sampling frequency should be more than ten times higher than the signal to be tested)



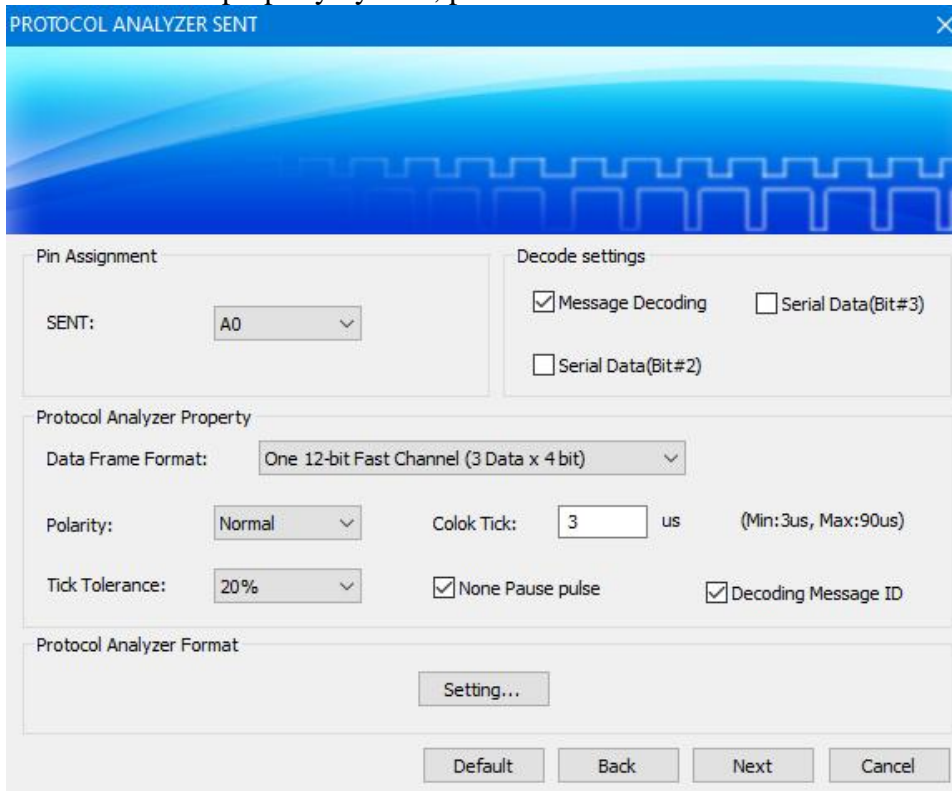
**STEP 2.** Add protocol decoder function

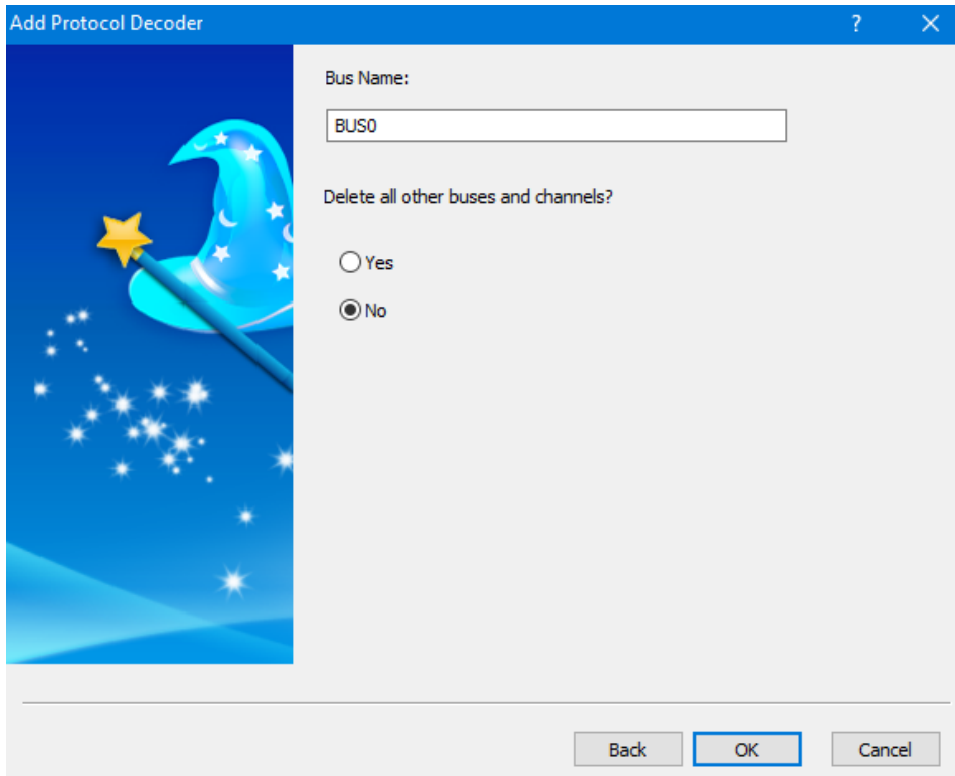


**STEP 3.** Find and select SENT V1.00.01(CN01). Then click Next to open the Configuration dialog box.



**STEP 4.** Set the property by case, press next.



**STEP 5.** Press OK.**STEP 6.** Following pictures show the completion of the protocol analyzer decoding and packet list.

The screenshot displays a protocol analyzer interface. At the top, there is a menu bar with options: File(F), Acquisition(A), Analysis(D), Mode(M), View(V), and Help(H). Below the menu is a toolbar with various icons. The main area shows a waveform with a time scale of 65us and a total duration of 838.8608ms. The waveform is labeled "BUS0(SENT)" and shows a series of pulses. A peak is labeled "217.4". Below the waveform is a "Packet List" table.

TimeStamp	Calibration/Sync	Status & Comm.	Channel1	Channel1	Channel1	CRC4
1.45ms	Calibration/Sync	0x0	0x8	0x0	0x4	0x5
1.8394ms	Calibration/Sync	0x0	0x8	0x0	0x2	0xC
2.2434ms	Calibration/Sync	0x0	0x8	0x0	0x2	0xC
2.6475ms	Calibration/Sync	0x0	0x8	0x0	0x2	0xC
3.0515ms	Calibration/Sync	0x0	0x8	0x0	0x3	0x1
3.4263ms	Calibration/Sync	0x0	0x8	0x0	0x3	0x1
3.801ms	Calibration/Sync	0x0	0x8	0x0	0x4	0x5
4.1904ms	Calibration/Sync	0x0	0x8	0x0	0x3	0x1

On the right side of the interface, there is a "Control Panel" with various settings: "Zoom" set to 65,012508949us, "Sample Depth" set to 838.8608ms, "Timing (Internal)" set to 10MHz, and "Trigger Position" set to 100%. At the bottom right, there is a circular navigation pad and an "End" button.